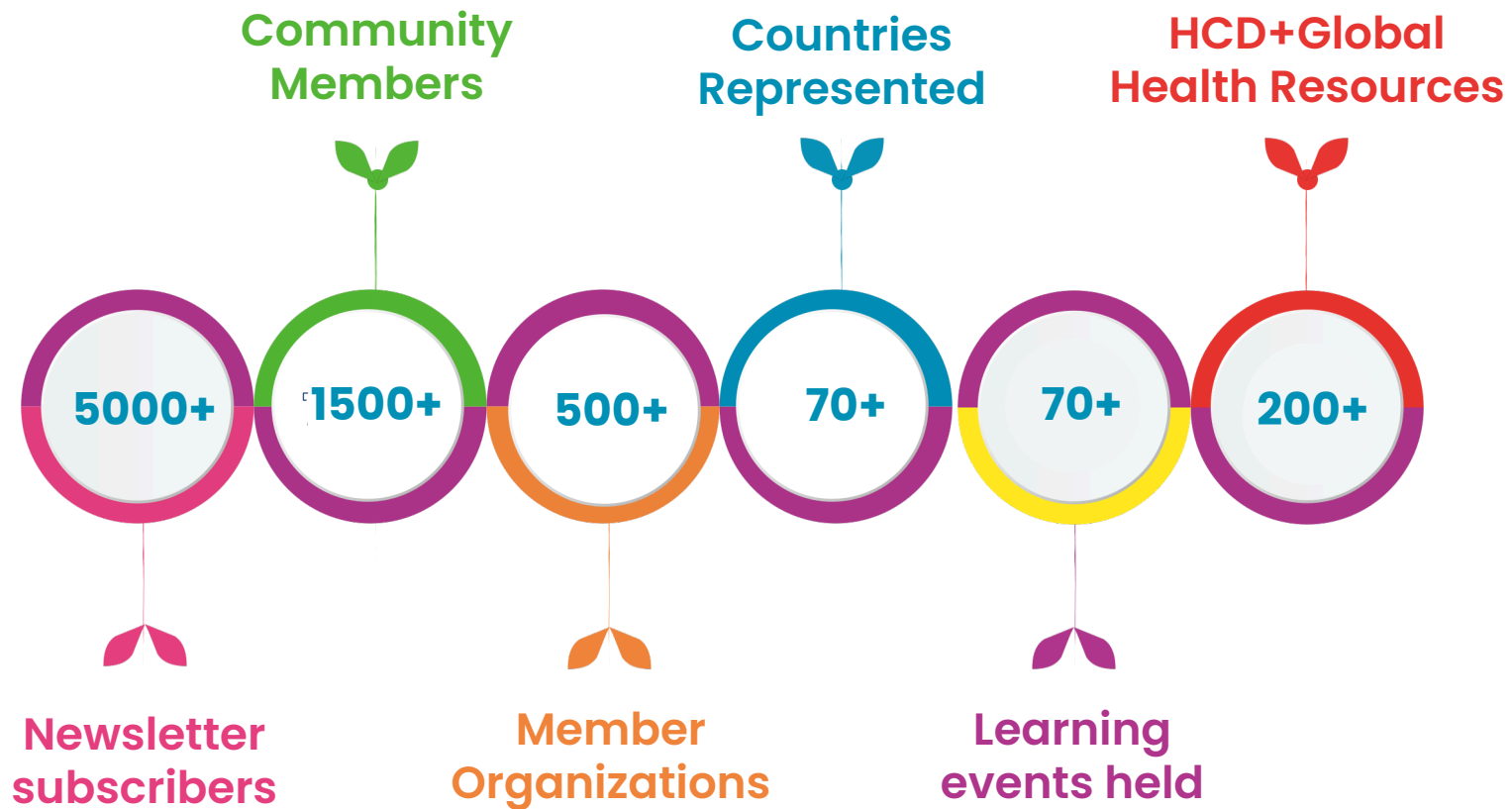
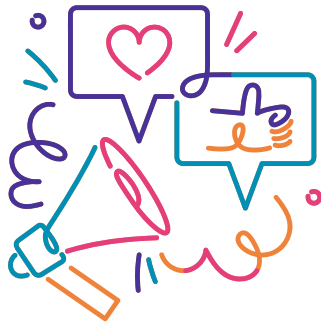
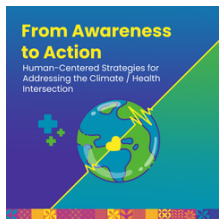


# HCDEXchange at a Glance





## 3 most popular newsletters with high opening rate



Read our newsletters!



**51.00%**

Intersection of Climate Change and Public Health

**43.00%**

HCD in Public Health

**36.00%**

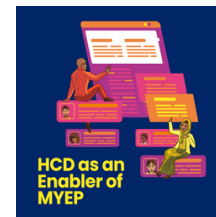
HCD+Public Health



## Learning briefs from 3 learning circles



Navigating through Institutional Review Boards for HCD Research

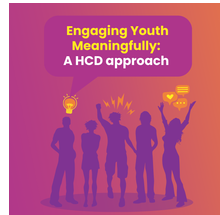


HCD as an Enabler of MYEP: A Comparative Analysis



HCD+AYSRH Learning Gap Analysis

## Publications



[Four-Step Journey to Meaningful Youth Engagement in AYSRH Programs](#)



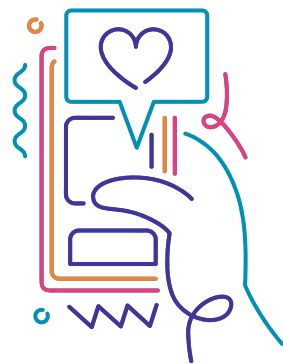
[Quality and Standards Framework in HCD+AYSRH](#)



[Measurement and Evaluation in Human-centered Design and Adolescent Sexual and Reproductive Health](#)



[Youth Integration: How has Human-Centered Design Contributed to Youth Engagement in Adolescent Sexual and Reproductive Health Programming?](#)



**Website  
users  
analytics  
and Global  
Coverage**

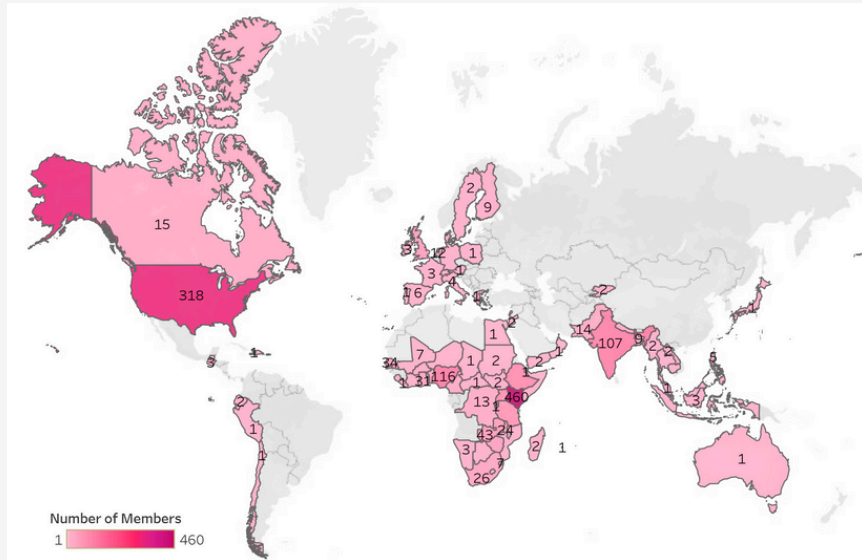
**104,770** views

**17,175** new users

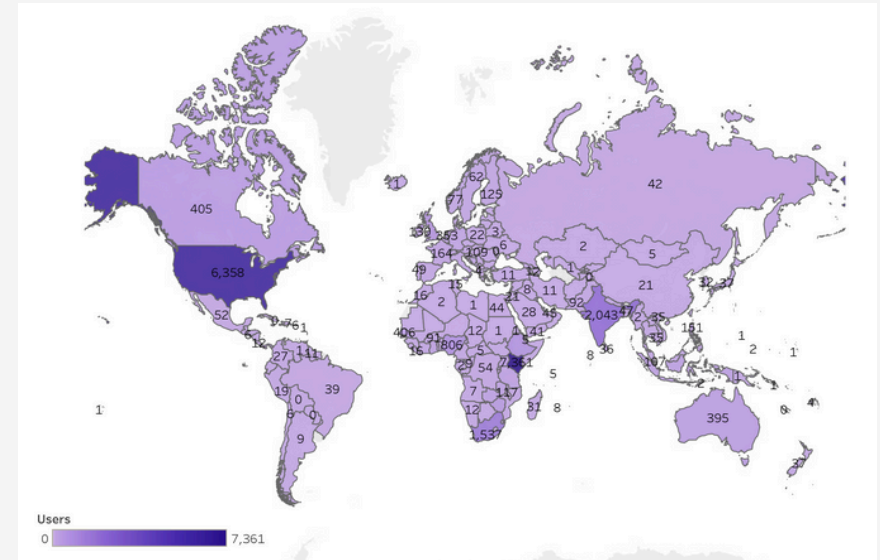


# HCDEXchange in Numbers

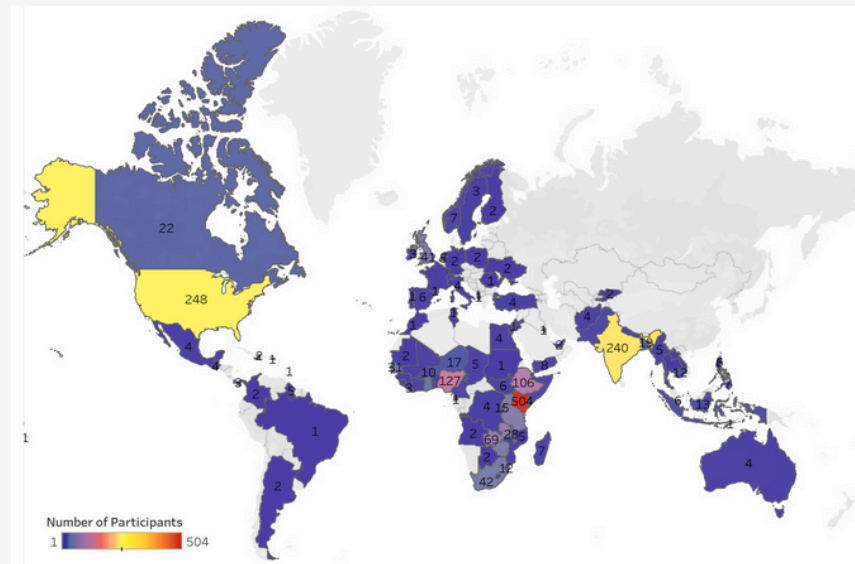
## Community of Practitioners Coverage



## Global Distribution of Website Users



## Global Coverage of Events Participants



## Topics of interest on the knowledge Hub by the Community of Practitioners



HCD in Digital Health

---



Meaningful Youth Engagement and HCD

---



Integrating HCD in SBC Programming

---



Intersection of Public Health, Climate and HCD

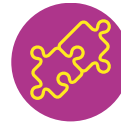
---



Measuring HCD Projects

---

## The HCDEXchange Newsletter Content of interest by the Community of Practitioners



Updates on HCDEXchange work and activities

---



HCD + Public Health Jobs

---



HCD + Public Health Opportunities

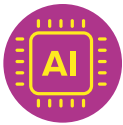
---



HCD + Public Health Thought Pieces

## Number of resources on the library and top resources with high interactions

292 resources uploaded on the library



[AI-Driven Clinical Decision Support Systems: An Ongoing Pursuit of Potential](#)

---



[Approach to Human-Centered, Evidence-Driven Adaptive Design \(AHEAD\) for Health Care Interventions: a Proposed Framework](#)

---



[Enhancing Community-Based Participatory Research Through Human-Centered Design Strategies](#)

---



[Human-centred design for tailoring immunization programmes](#)

---



[A Theory of Change for Guiding the Integration of Human-Centered Design Into Global Health Programming](#)

## Events and Attendance rates

#of registered participants

Theme/ Title of Activity

**568**

HCD Prototyping & Testing: Conceptualization & Refinement of Public Health Solutions

---

**545**

MLE in HCD for Public Health Programs: A fireside chat

---

**542**

Subsets of Design

---

**537**

Designing Community Led Business Models (CLBM) for Sustainable Social Impact in Humanitarian Settings. A reflection of case studies from Ethiopia, Uganda, and Syria.